



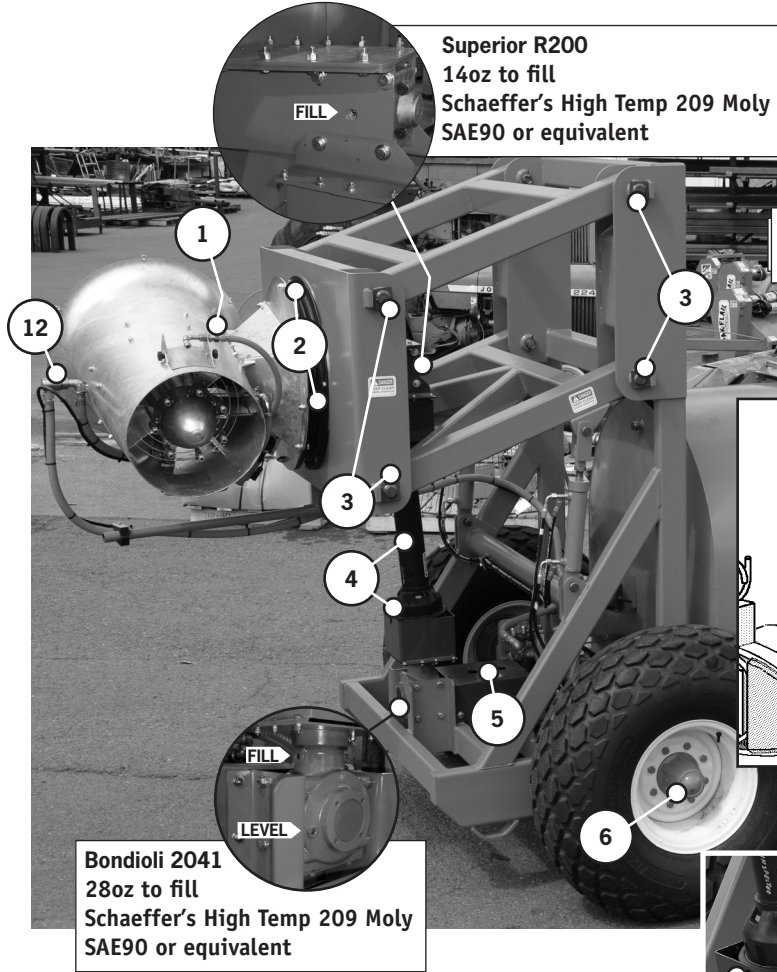
CANNON SPRAYER

READ THIS MANUAL BEFORE OPERATING

10.02.19

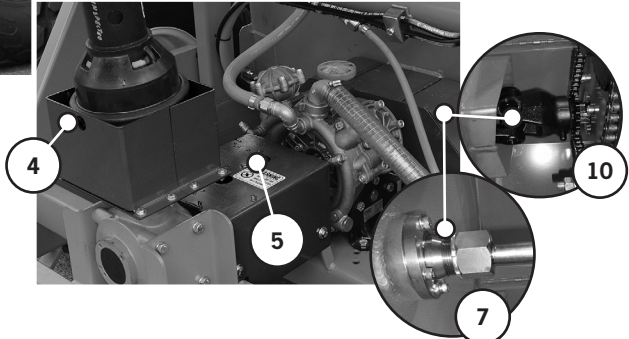
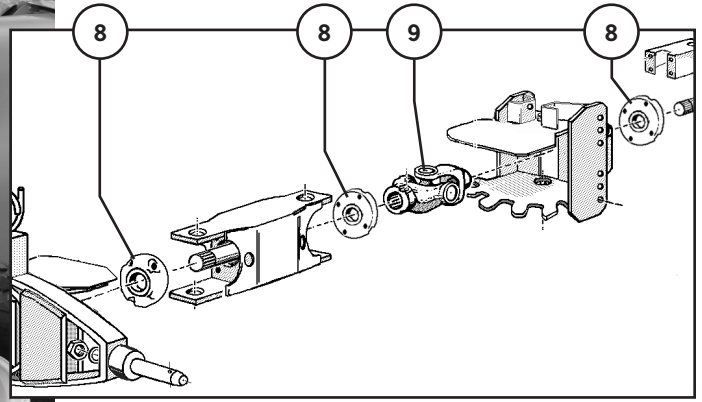
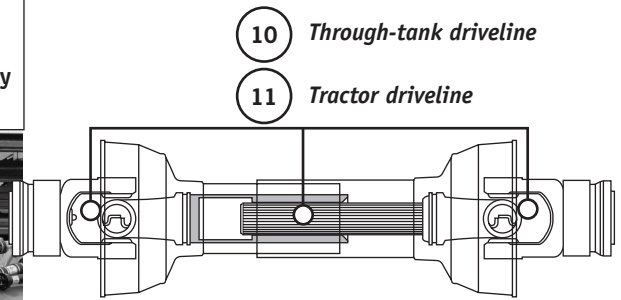


1-800-346-7867




Superior R200
14oz to fill
Schaeffer's High Temp 209 Moly
SAE90 or equivalent

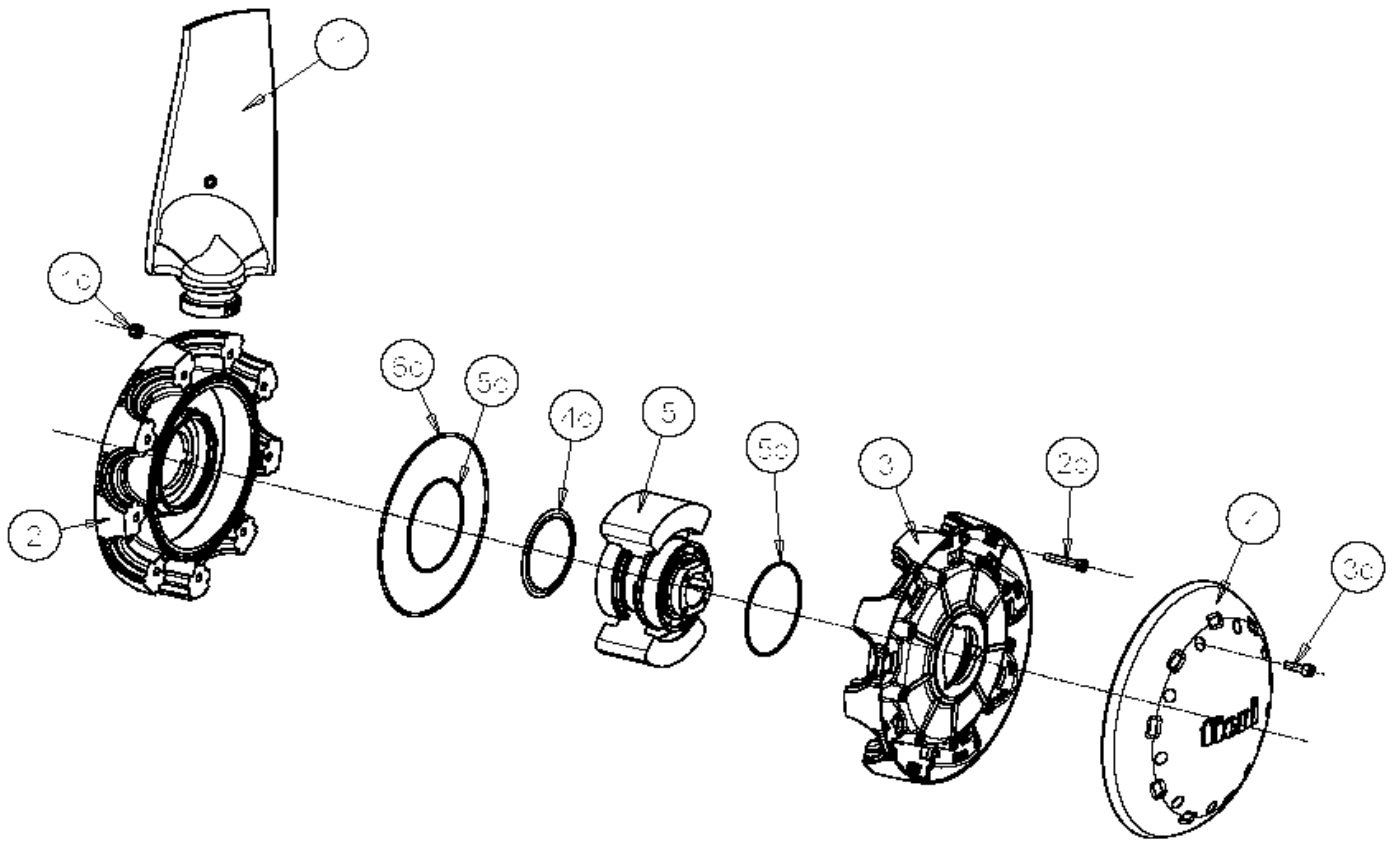
Bondioli 2041
28oz to fill
Schaeffer's High Temp 209 Moly
SAE90 or equivalent



For first time use, grease all lube points as instructed on the lubrication schedule, below.

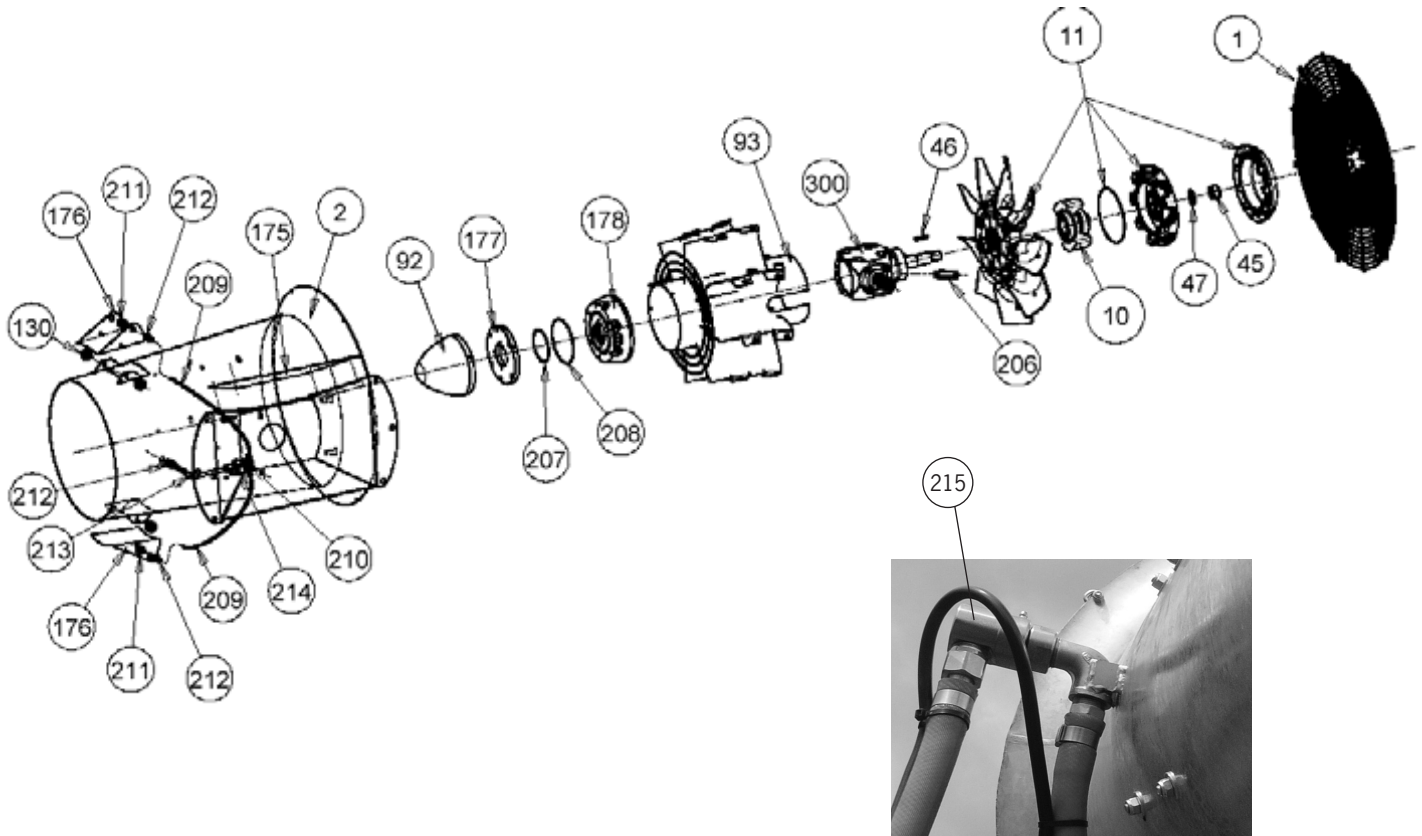
 Always use a Lithium base NLGI Grade 2 EP grease. We recommend Texaco Multifak EP2, Shell Alvania 2EP, and Mobil Mobilux EP2.

No	Description	Special Instructions	Hours	Pump
1	Fan drive U-Joint	Single cross behind access panel: requires panel removal	8	2-3
2	Turret Carousel	2 points on Turret ring: Apply 10 pumps into each and rotate the head 180°. Apply 10 pumps into each and rotate head to distribute lubricant.	40	20: see instruct
	Thru-pivot driveline	Lube point at cross, each end	100-150	2-3
3	Pantograph pivot points	8 points: Lower and raise pantograph to access lube points	40	purge
4	Pantograph driveline	Lube point at cross, each end	40	2-3
		Lube point for telescoping shaft- align telescoping guard sleeves	40	8-10
5	Double U-Joint	Lube point at cross, each end	8	2-3
6	Wheel hub	1 point each wheel, purge vents at seal	40	purge
7	Agitator bearing	1 point each end of tank. Do not overgrease: vents to tank	16	1-2
8	CVHitch center link bearings CVHitch output shaft bearing	51 series hitch with sealed bearings	do not grease	
		51 series hitch with ball bearings, purge vents at seal	8	purge
		71 series hitch with ball bearings, purge vents at seal	8	purge
9	CVHitch rear U-Joint	71 series hitch with roller bearings, purge at vent opposite zerk	8	purge
		Lube point at cross	4	1-2
10	Through-Tank driveline	Lube point at cross, each end, and telescoping shaft	8	2-3
11	Tractor driveline	Lube point at cross, each end	8	2-3
		Lube point for telescoping shaft	8	8-10
12	Swivel hose coupling	Single lube point	40	2



Cannon fan

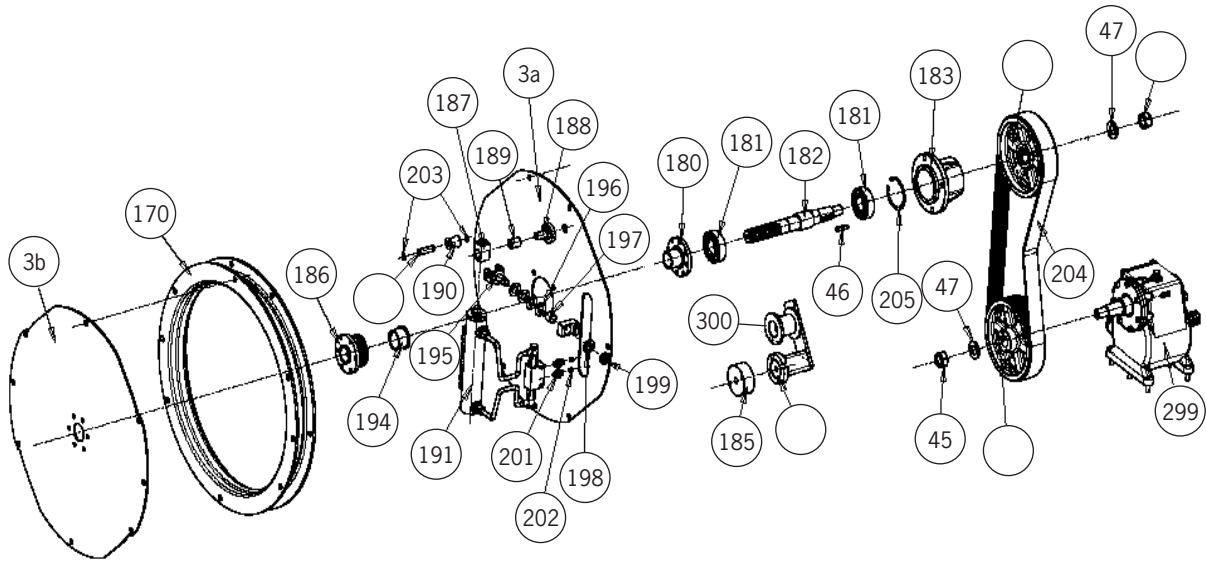
No.	Part #	Description	Qty
	VPLDSN50005	complete fan assembly	
1	PAL00000050	blade	9
1c	AUT00000004	M6 locknut	9
2	FUS00000185	male fan hub with clutch lining	1
2c	TCC00000008	bolt M6x35	9
3	FUS00000193	female fan hub with clutch lining	1
3c	TCC00000137	bolt M6x20 stainless steel	9
4	COP00000010	yellow fan cover	1
4c	ANE00000063	ring 79x71x0.6	1
5	FRI00000007	clutch	1
5c	ORM00000001	o-ring 0800x2	2
6c	OR000000034	o-ring 3625	1



Cannon fan housing

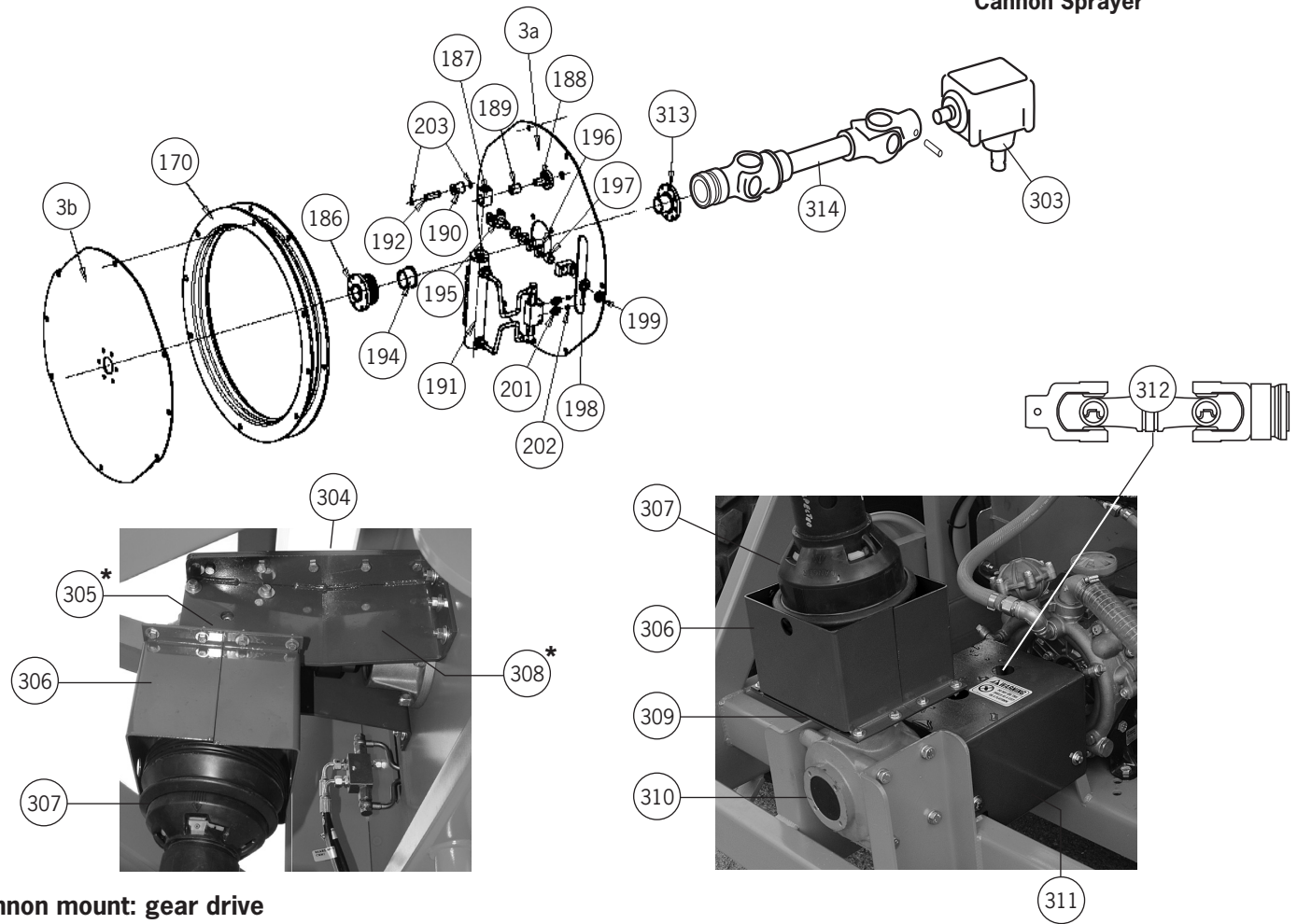
No.	Part #	Description	Qty	No.	Part #	Description	Qty	
1	RET00000002	fan guard	1	209		3/8" pvc hose	-	
2	CNV00000031	complete fan housing	1	210	DIS00000030	nozzle supply assembly <i>incl. 213, 214</i>	1	
10	see fan page				RAC00000001	fitting for cone 201,6 1/4M	2	
11	see fan page			211	ATT00000002	side coupling for nozzles	2	
45	AUT00000010	24MB locknut	1	212	RAC00000004	fitting for cone 1/4F	2	
46	CHI00000003	key 8x7x40	1	213	TUB00000075	copper line	1	
47	RON00000005	washer 24x44x4	1	214	NIP00000004	nipple 102 3/8-1/2	1	
92	OGI00000005	cone	1			RAC00000006	fitting L110 3/8MF	1
93	RAD00000018	straightening vanes	1			RAC00000005	fitting for cone 201,10 3/8M	2
130	MAN00000012	deflector adjustment bolt M6x15	4			PRI00000012	stud 8x20	1
175	RIP00000007	fan housing cover only	1	215		90° hose swivel	1	
176	SCA00000008	complete deflector assembly	2	300	RIN00000037	gearbox	1	
	SCA00000001	deflector plate	1ea					
177	FLA00000015	flange	1					
178	FUS00000141	cover for nozzles	1					
206	PRO00000003	oil fill	1					
207	OR00000021	o-ring 3525 94,92x2,62	1					
208	OR00000020	o-ring 3375 133,02x2,62	1					

Read this manual completely before operating: follow all safety instructions.



Cannon mount: belt drive

No.	Part #	Description	Qty	No.	Part #	Description	Qty
3a	PIA00000121	complete backplate assembly	1	189	BOC00000027	bronze bushing	1
	PIA00000114	backplate only	1ea	190	RUL00000001	roller	1
	SUP00000017	cylinder support	1ea	191	CIL00000001	cylinder <i>includes 201, 202</i>	1
	SUP00000016	cylinder support (see item 188)	1ea	192	SPN00000013	pin	1
3b	PIA00000092	wheel	1	193	GOL00000001	eyebolt	1
45	AUT00000010	locknut 24MB P2	2	194	BOC00000002	bushing for flange	1
46	CHI00000003	key 8x7x40	1	195	FOR00000004	fork	1
47	RON00000103	washer 24x44x4	2	196	MLL00000014	spring 18x35x1.25	1
58	FUS00000148	pulley	2	197	BOC00000025	bronze bushing 18x23x18	1
170	RAL00000004	wheel	1	198	RON000000100	washer 18x34x3	1
180	COP00000003	cover	1	199	GHI00000004	locknut M15 P1	1
181	CUS00000018	bearing 6307 2RS	2	201	NIP00000003	nipple 1/4M 1/4M	1
182	PER00000030	shaft	1	202	GRAF000012	screw M8x80 hole of 0.7	1
183	FUS00000157	support	1	203	SEG00000020	circlip E14	2
184	SE27	idler arm	1	204	CIN00000003	belt 10L 1715	1
185		idler mount block	1	205	SEG00000014	circlip 180	1
186	FLA00000005	flange	1	299		gearbox	1
187	OCC00000003	ring for cylinder	1	300	OM714	idler pulley	1
188	SUP00000016	cylinder support	1				



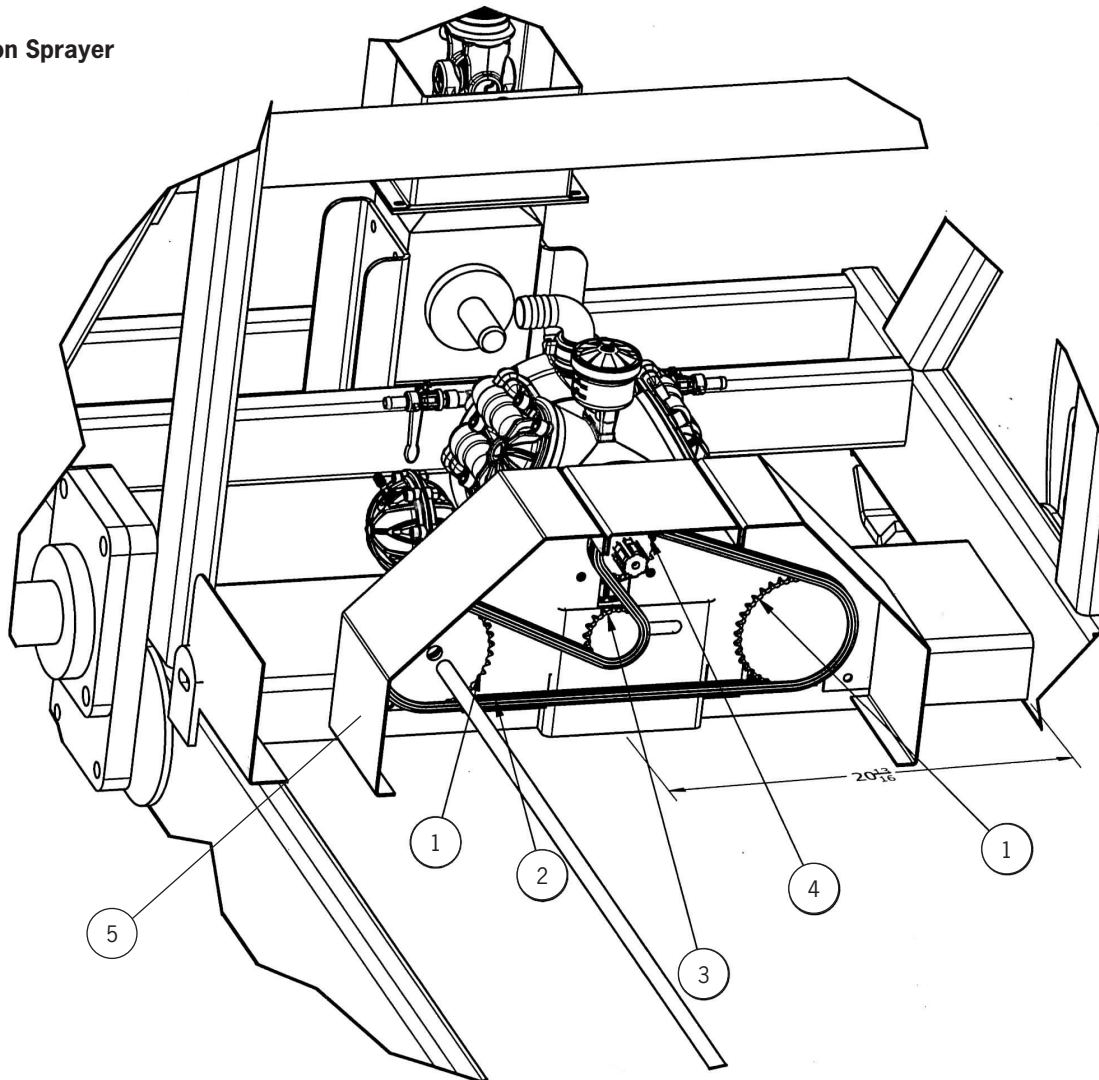
Cannon mount: gear drive

No.	Part #	Description	Qty
3a	PIA00000121	complete backplate <i>includes • items</i>	1
	PIA00000114	backplate only	• 1ea
	SUP00000017	cylinder support	• 1ea
	BOC00000025	bushing 18x23x18 <i>see item 197</i>	• 1ea
	SUP00000016	cylinder support <i>see item 188</i>	• 1ea
3b	PIA00000092	wheel	1
170	RAL00000004	wheel	1
186	FLA00000005	flange	1
187	OCC00000003*	ring for cylinder	1
188	SUP00000016	cylinder support <i>welded on</i>	1
189	BOC00000027*	bronze bushing	1
190	RUL00000001	roller	1
191	CIL00000001*	cylinder <i>includes 201, 202</i>	1
192	SPN00000013	pin	1
193	GOL00000001	eyebolt	1
194	BOC00000002	bushing for flange	1
195	FOR00000004	fork	1
196	MLL00000014	spring 18x35x1.25	1
197	BOC00000025	bronze bushing 18x23x18	1
198	RON000000100	washer 18x34x3	1
199	GHI00000004	locknut M15 P1	1
201	NIP00000003	nipple 1/4M 1/4M	2
202	GRAF000012	screw M8x80 hole of 0.7	2
203	SEG00000020	circlip E14	2
204	CIN00000003	belt 10L 1715	1

**items 187, 189 and 191 must be ordered together*

No.	Part #	Description	Qty
303	R200-9AAA-A0185	gearbox	1
304	CNIN2017	gearbox mount top plate	1
305	CNIN2043*	upper driveline guard mount angle	2
306	CNIN2041	driveline guard half	4
307	DL385	<i>see driveline parts page</i>	1
308	CALL*	gearbox mount plate, L/R	1/1
309	CNIN2042	lower driveline guard mount base	1
310	2041-258-R110	2041 gearbox w/vertical pantograph oil fill	1
311	CNIN2048	pump through shaft drive guard	1
312	UJD304G5	<i>see driveline parts page</i>	1
313	CNHD101	cylinder gear pivot shaft	1
314	CNHD110A	<i>see driveline parts page</i>	1

* The gearbox mount plate **308** and the upper driveline guard mount angle **305** are installed at the factory with alignment rollpins to aid re-assembly after repair. If parts **308** or **305** must be replaced, alignment tooling must be used: call for more information.



Agitator chain drive see PulBlast manual for belt drive

No.	Part #	Description	Qty
1	PB4036075	40 tooth gear	1
2	PB40CH-BULK	#40 roller chain, see chart	-
	PB40CH-LINK	master link for #40 chain	1
3	PBG7-40A	18 tooth gear	1
4		see DL372 GEAR below	-
5		agitator drive guard	1

When counting links (shaded gray) do not count the outside plates (white) or master-link (not shown here)

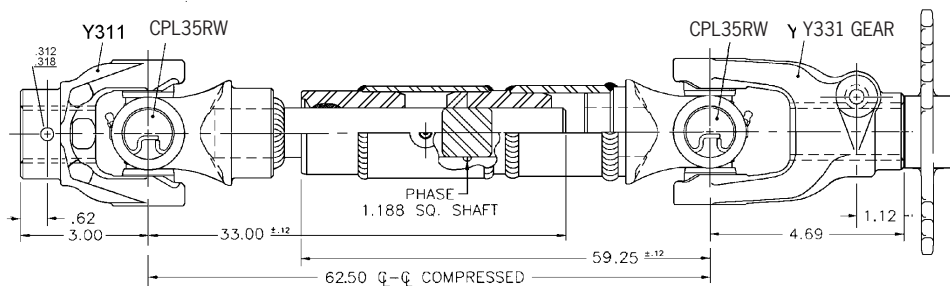


ordering agitator chain

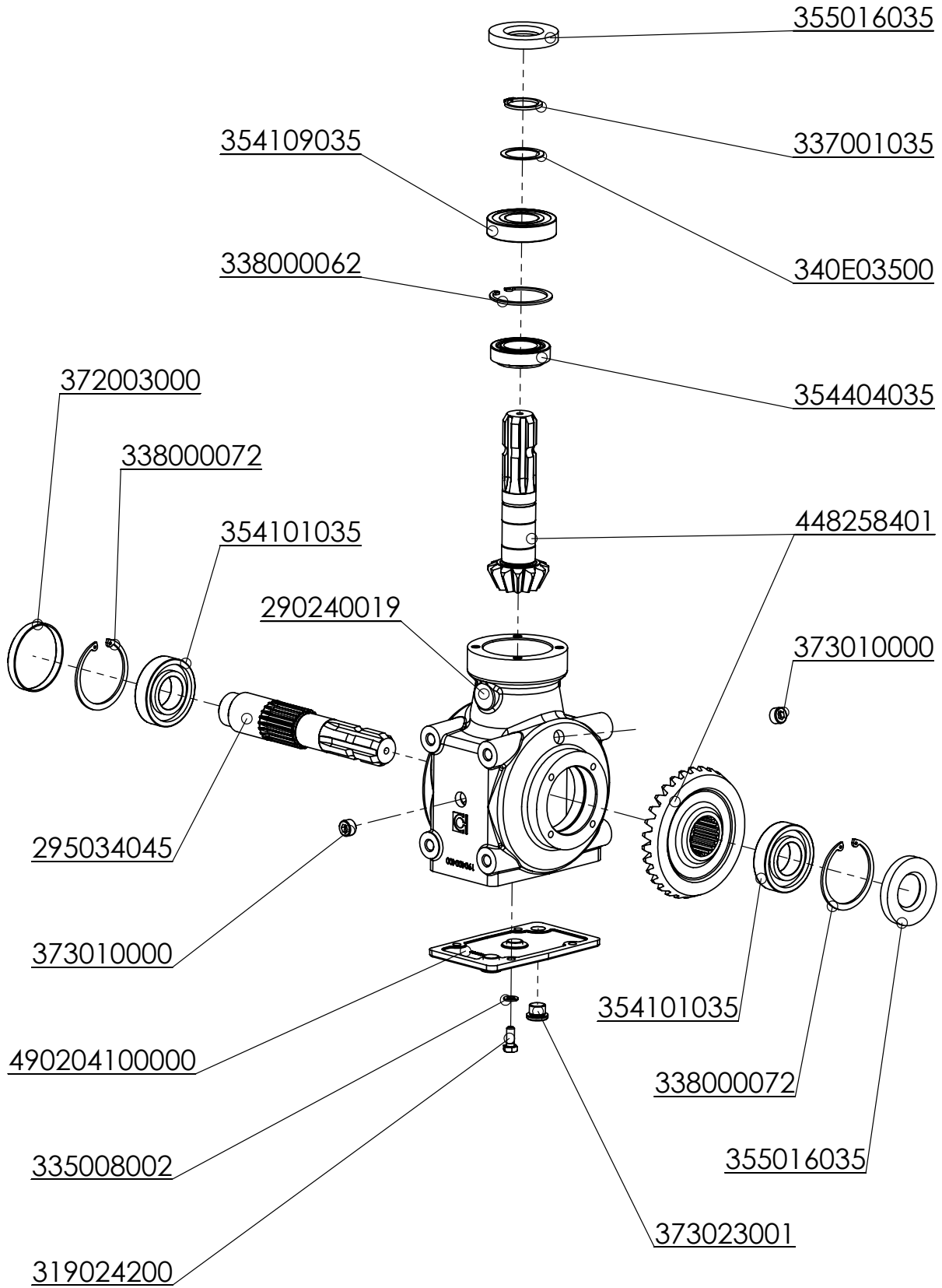
MODEL	# LINKS*	LENGTH*
500 gal	64	64"
1000 gal	64	64"

* Does not include master link.
Length is given for new chain.

DL372 GEAR

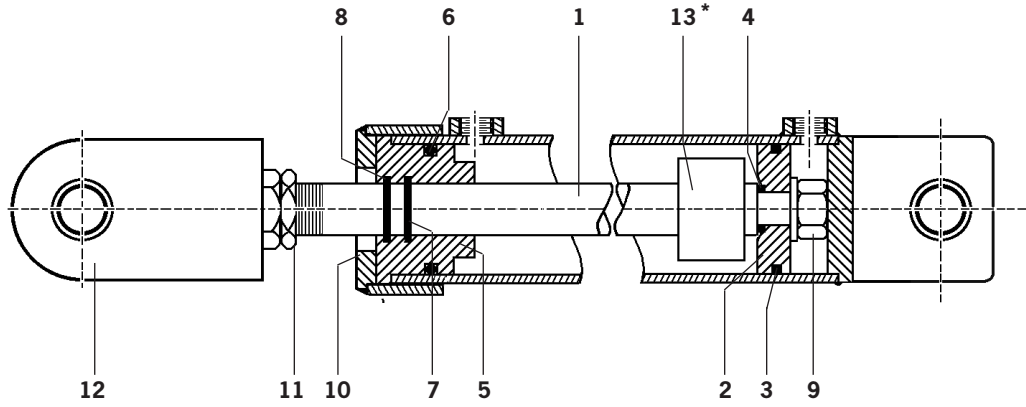


2041-258-R110 Gearbox



Read this manual completely before operating: follow all safety instructions.

10 Cannon Sprayer

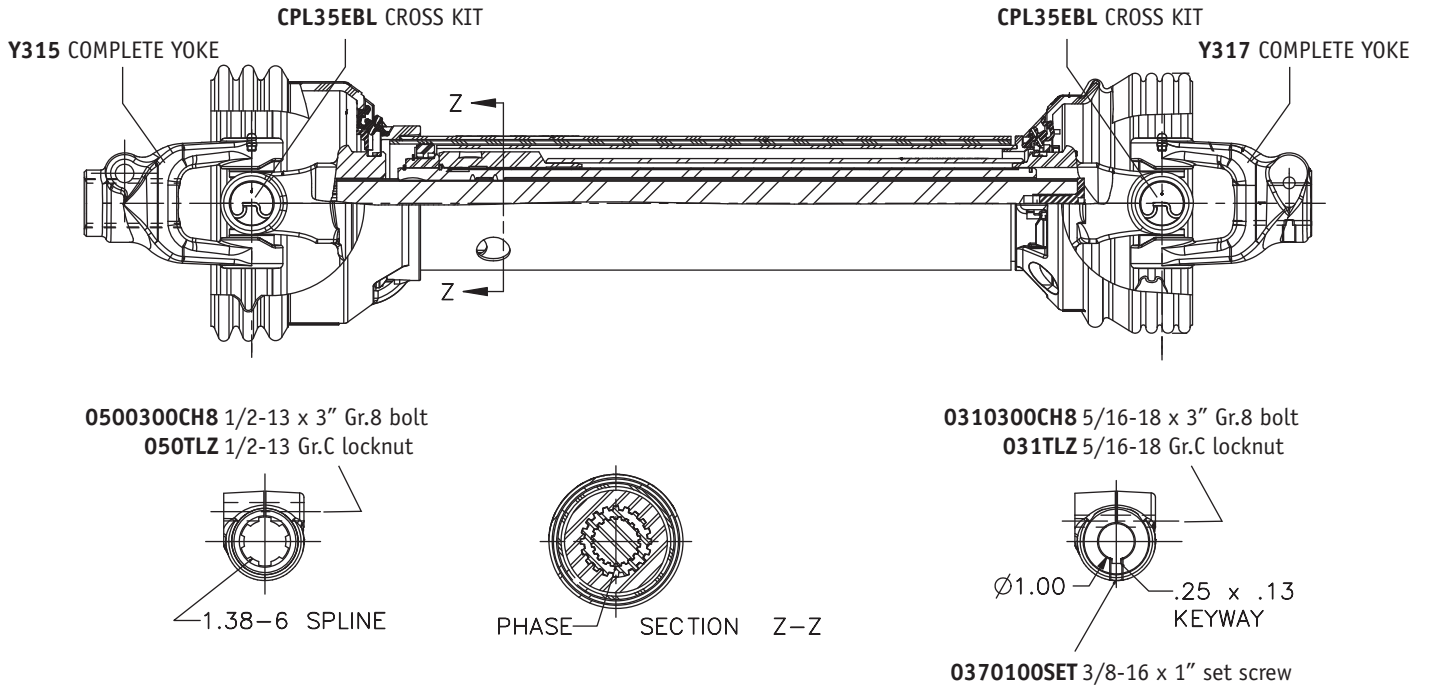


Parts list: hydraulic lift cylinder

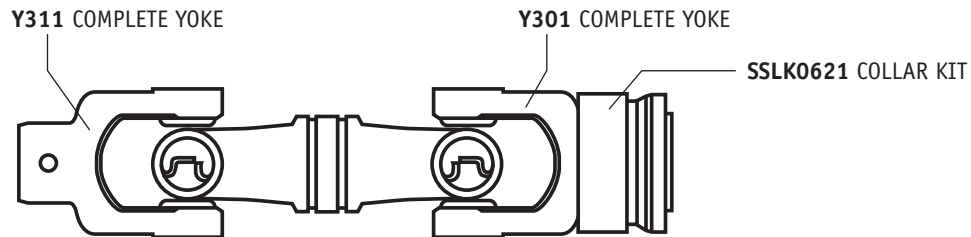
No.	Part #	Description	Qty
	CYL20085GUN	complete hydraulic cylinder <i>standard mast</i>	
	CYL20085	complete hydraulic cylinder <i>short mast</i>	
	HCSK2	seal kit, includes all • items	
1	ROD2008	cylinder rod	1
2	PN200	piston	1
3	PSP-326	• piston seal	1
4	2-016	• piston o-ring	1
5	HD200	cylinder head	1
6	2-326	• head o-ring	1
7	1250-1000	• rod seal	1
8	959-9	• wiper	1
9	063TLZ	oval top lock nut	1
10	CAP200	cylinder cap	1
11	101NJ	clevis jam nut	1
12	CYL955	clevis	1
13*	CYLSTOP2X125	1-1/4" internal stop	2

*Internal stop not included with short mast models

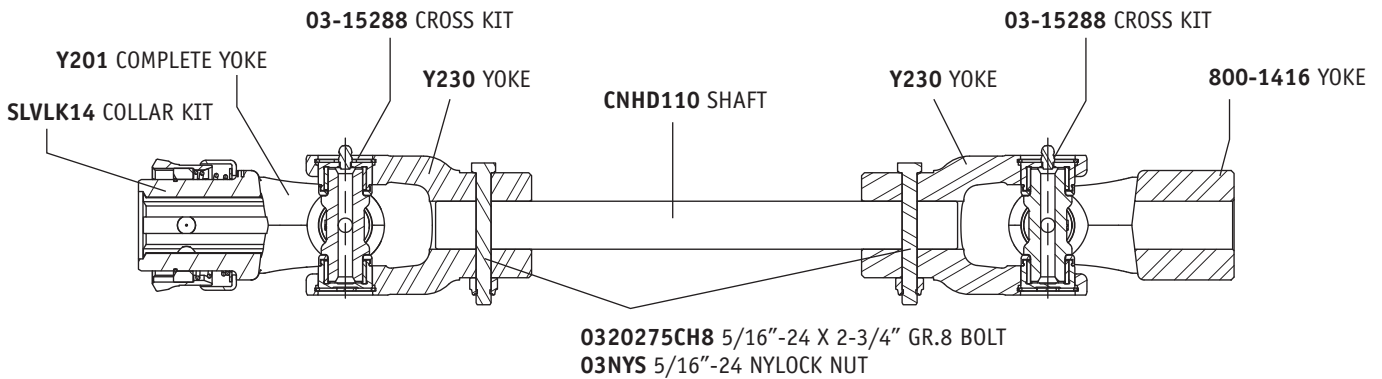
Parts list: DL385 pantograph driveline



Parts list: UJD304G5 pump coupler driveline



Parts list: CNHD110A fan drive thru-pivot

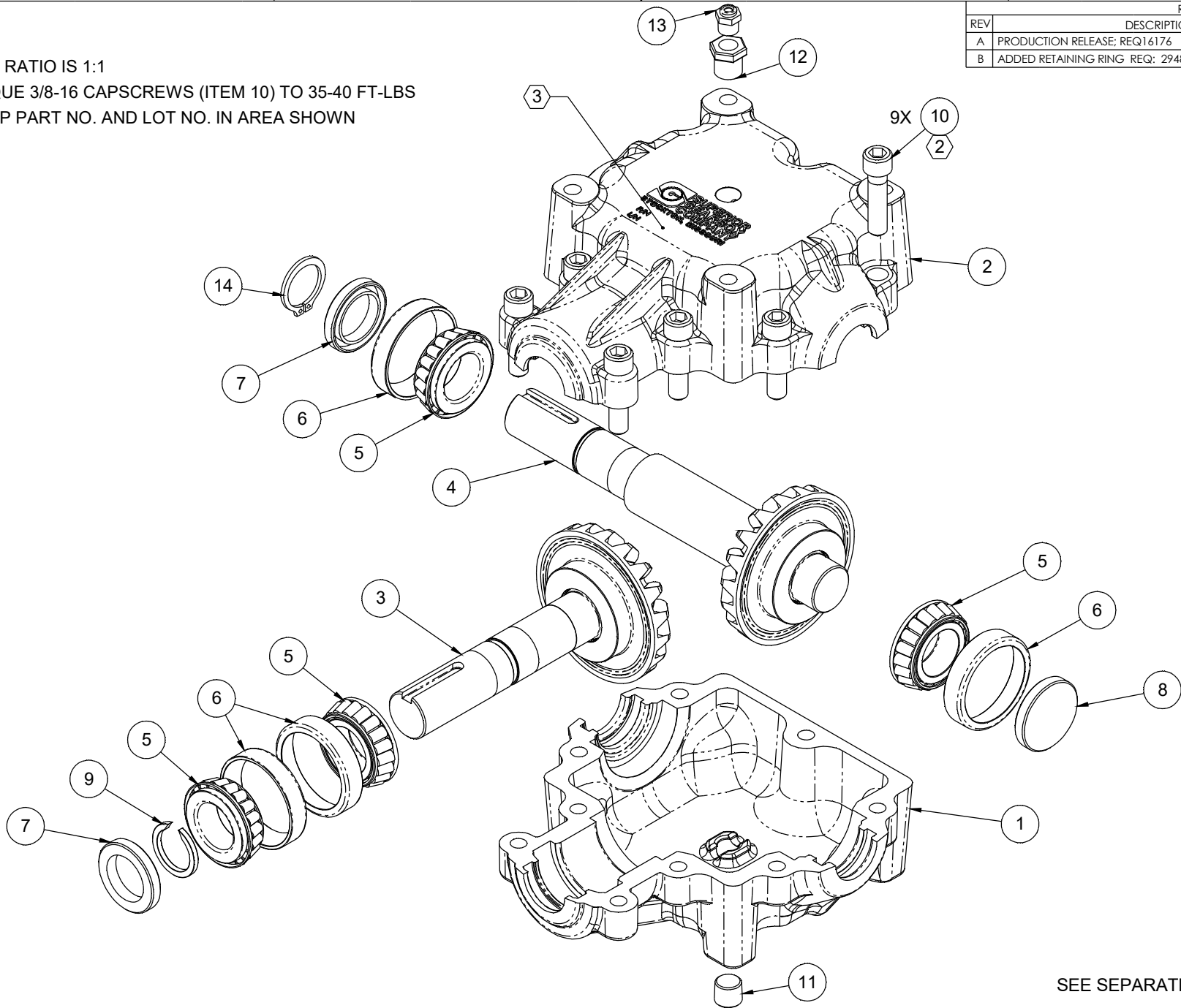


Read this manual completely before operating: follow all safety instructions.

NOTES:

- 1. GEAR RATIO IS 1:1
- ② TORQUE 3/8-16 CAPSCREWS (ITEM 10) TO 35-40 FT-LBS
- ③ STAMP PART NO. AND LOT NO. IN AREA SHOWN

REVISIONS			
REV	DESCRIPTION	DATE	APPROVED
A	PRODUCTION RELEASE: REQ16176	-	-
B	ADDED RETAINING RING REQ: 294864	4/21/22	J. CLARK



SEE SEPARATE BILL OF MATERIAL

MATERIAL:
-

THIS DRAWING CONTAINS INFORMATION THAT IS PROPRIETARY AND CONFIDENTIAL AND THE EXCLUSIVE PROPERTY OF SUPERIOR GEARBOX COMPANY AND MAY NOT BE REPRODUCED, USED OR DISCLOSED WITHOUT WRITTEN PERMISSION OF THE OWNER

UNLESS OTHERWISE NOTED

DIMENSIONS ARE IN INCHES
TOLERANCES
.X ± .09 .XX ± .03 .XXX ± .015 ANGLES ± 1°

THIRD ANGLE PROJECTION

-REMOVE ALL BURRS AND BREAK SHARP EDGES
-MACHINED SURFACES SHALL BE 125 μ IN.
-THREAD DEPTH CALLOUTS INDICATE DEPTH OF FULL THREADS
-DIMENSIONAL LIMITS APPLY AFTER FINISH OR HEAT TREAT

DFTR	J. CLARK	DATE	11/07/12
CHKR	R. TVEITNES	DATE	11/08/12
ENGR	C. FOX	DATE	11/08/12
MFG	-	DATE	-
QC	-	DATE	-
-	-	DATE	-

SUPERIOR GEARBOX COMPANY
P.O. BOX 645 STOCKTON, MO 65785

ASSY, GEARBOX R200

SIZE: PART NO. R200-9AAA-N0459 REV B

SCALE 1:1 DO NOT SCALE DRAWING SHEET 1 OF 1



SUPERIOR GEARBOX COMPANY

BILL of MATERIAL (PRICE LIST)

Customer-Name: REARS

Superior Gearbox P/N: R200-9AAA-N0459

Customer P/N:

Seq	Component-Item	Description	Qty-Per	Prc-Ech
1	210003-0	HSG, R200 MACH TAP STD	1	
2	210004-0	HSG, R200 MACH THRU STD	1	
3	R200-8B00-N0462	SUBA, R200 STUB SHAFT/GEAR	1	
4	R200-8B00-N0463	SUBA, R200 CROSS SHAFT/GEAR	1	
5	244643	BRG, CONE TK# L44643 1.000	4	
6	244610	BRG, CUP TK#L44610 1.9800	4	
7	209843	SEAL, 1.00-1.499-.25 (R) TC	2	
8	200301	SEAL, END CAP,1.50-.25	1	
9	203293	RETAINING RING, EXT 1.000 SHFT	1	
10	203815	BOLT, 3/8-16 X 1.50 SHCS	9	
11	200300	PLUG, 1/4-18 NPT SCHD W/3M	1	
12	2003VB	BUSHING, 1/4 NPT X 1/8 NPT	1	
13	2003PR	PLUG, 1/8-27 NPT VENT 5PSI	1	
14	X000-48A0-A0165	LUBE/EP 80W90	14	

** These prices apply only when correlated with production gearbox orders **